



SOUTHERN KENTUCKY PERFORMING ARTS CENTER

TECHNICAL RIDER

Last Revised: 10/14/24

- **Contact Info**
 - Technical Director—**Scott Gardner**
 - Phone—270-904-5024
 - Cell—270-779-5621
 - Email: SGardner@artsofsky.org
 - SKyPAC Main Phone—270-904-5000
 - Ticket Office Phone—270-904-1880
 - Rentals—**Jennay Keelin**
 - Phone—270-904-5017
 - Email: JKeelin@artsofsky.org
- **Website**
 - www.theskypac.com
- **Address**

SKyPAC
601 College Street
Bowling Green, KY 42101

- **Shipping Notes**

- No USPS shipping or mail
- FedEx or UPS only
- You must advance with us if you plan to ship any gear to our venue before your arrival.
- You must handle all shipping returns.
- We are not responsible for shipping items left behind.

- **Location**

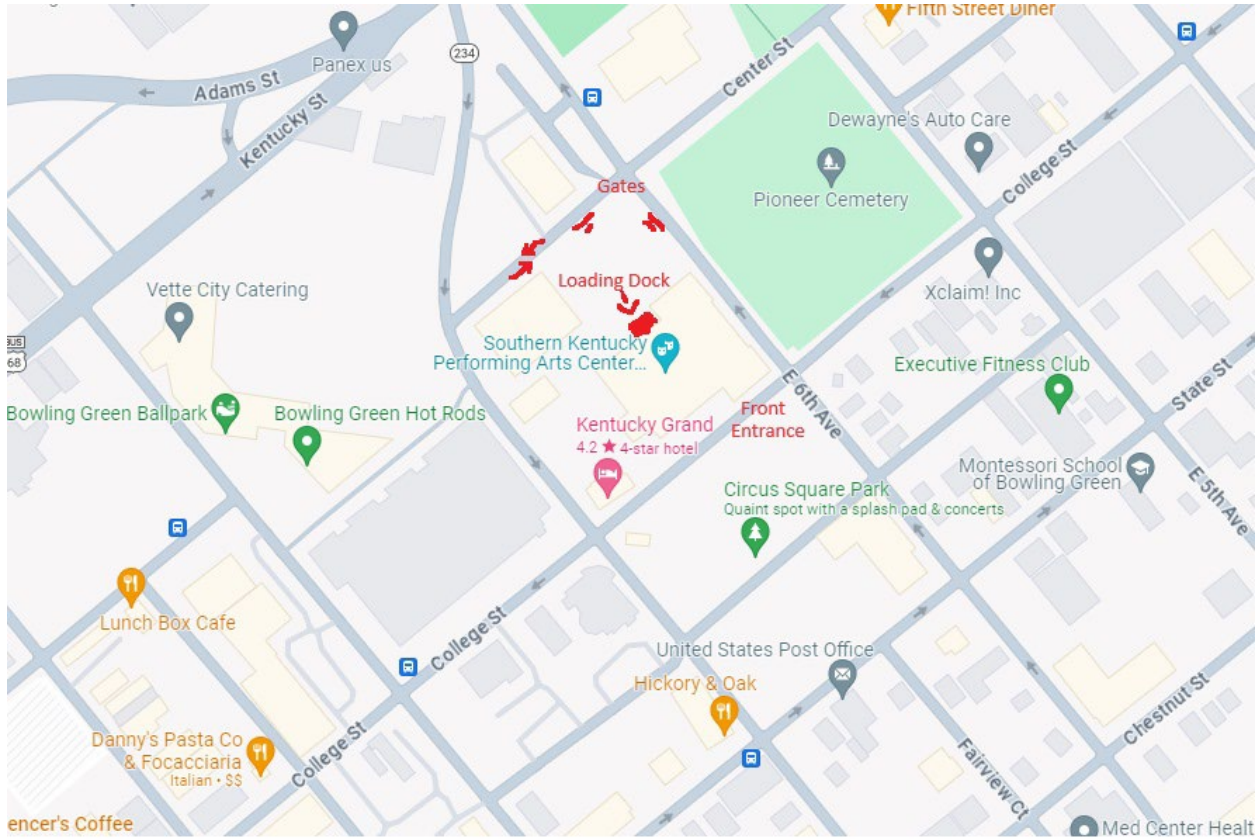
- SKyPAC is located in downtown Bowling Green on College Street, between 6th and 7th Avenues.
- The main entrance is located on College Street, just beyond the large sign. This is also the closest access to the Ticket Office and Main Lobby.
- Dock access and tour parking is in the rear lot facing Center Street.
- Exits are located throughout the building.
- For more detailed information, call our main line at 270-904-5000.

- **Directions**

- From the North: Take I-65 South to Bowling Green Exit 26. Turn right onto Cemetery Road. Cemetery Road becomes Fairview Ave which becomes 6th Street. Crossing over College Street, the SKyPAC will be on your left, and take the next left onto Center Street. Turn left into the gated parking lot and use the gate code issued. The loading dock and stage door are directly in front of you.
- From the South: Take I-65 North to Bowling Green Exit 26. Turn left onto Cemetery Road. Cemetery Road becomes Fairview Ave which becomes 6th Street. Cross over College Street, The SKyPAC will be on your left, and take the next left onto Center Street. Turn left into the gated parking lot and use the gate code issued. The loading dock and stage door are directly in front of you.

- **Parking**

- Free parking is available nearby in the Stadium Park Plaza Parking Garage on College Street, between 7th and 8th Avenues, with entrances to the garage located off 7th and 8th Avenues. Street parking is also available nearby on a first-come, first-serve basis.
- Premium parking for ticketed events is available exclusively for Elm Street Society members behind SKyPAC off 6th Street and Center Street.
- Patrons may be dropped off near the front doors on College St, which is a one-way street running east to west.



- **House Policies**

- Prior to performance time and during intermission, snacks, soft drinks, wine, beer, and liquor are served at SKyPAC's bars in the Lobby and on the 2nd floor Lobby Balcony. Only food and beverages purchased at SKyPAC are allowed in the facility.
- No smoking is allowed in the building whatsoever. Smoking is permitted outside in designated areas, or at least 50 feet from an entrance.
- Decorations and signs may not be placed on the building exterior, outside walkways, lobby, or in any rooms or hallways in the building without the permission of SKyPAC. Costs to repair any damage caused by placing decorations or signs will be paid by the Licensee.
- Animals (other than service animals) will not be allowed in the building for any reason other than use in the event and only after written approval of the SKyPAC Technical Director prior to load-in. The Licensee is responsible for training and safety requirements of all animals, including service animals, approved to be on the property.
- The safety and well-being of our patrons, artists, and staff are of the utmost importance. To ensure a safe venue for all, the possession of firearms, fireworks, explosives, incendiary devices, knives, or weapons of any kind is prohibited on SKyPAC's property and in all facilities, except those carried by law enforcement officers on duty. Anyone found in violation will be asked to secure the weapon inside their vehicle or at home or leave the property immediately. No ticket returns, refunds, or exchanges will be made for anyone violating the facility weapons ban.
- All bags must be 12" x 12" x 6" or smaller. They must be **clear** with logos only on one side. Non-transparent bags, wallets, and cases must not exceed 4.5" x 6.5" and must be placed inside a larger, clear bag.
- Without exception, all bags are subject to inspection.

- **Production-Related Policies**

- SKyPAC equipment must be operated by SKyPAC personnel only.
- Before the event, the Licensee must provide Technical Director with a complete list of all persons allowed in the backstage area. SKyPAC reserves the right to restrict backstage access as needed.
- The house opens 60 minutes before the start of the performance unless written permission is obtained from the Technical Director prior to showtime. All set-up and sound checks must be completed by this time. SKyPAC personnel will assist the Licensee in opening the house on time. In the event a delay in opening the house is necessary, the Technical Director and Licensee representative will communicate to all necessary parties so that this process goes smoothly.

- The express oral approval of the SKyPAC Technical Director, in collaboration with the Licensee Stage Manager, is required before the start of each performance and end of intermission.
- House seats will not be removed or killed to accommodate sound or lighting boards without written approval from the Technical Director at least three (3) days before the show.
- SKyPAC reserves the right to control the final sound pressure level for any event.
- All smoke, open flame (including candles, Sterno, etc.) and pyrotechnic effects must be approved in advance by the SKyPAC Technical Director, the Bowling Green Fire Marshal, and the State Fire Marshal's Office. Licensee must provide a written description of each effect and/or use of open flame and may be called upon to demonstrate that effect or other use to the Fire Marshal prior to approval. Pyrotechnic effects permits also require a drawing of the stage showing locations of the effects with respect to the audience, actors, performers and scenery, and a letter attesting to the expertise of the pyro-technician. The Licensee shall work in conjunction with the SKyPAC Technical Director in coordinating demonstrations with the Fire Marshall. Pyrotechnic permits through both the State and Local Fire Marshall's offices must be issued no later than ten (10) business days prior to the demonstration. Substantial fees are involved in this process and are Licensee's responsibility. All use of open flame and cooking methods must be advanced and approved by SKyPAC Technical Director prior to event.
- All scenery and paraphernalia shall be flameproofed by the Licensee to satisfy legal standards and the highest safety standards of accepted contemporary practice. Documentation of flame-proofing shall be provided to SKyPAC upon request.
- All electrical equipment brought into the facility by Licensee must comply with all rules and regulations of city, state, and federal governments.
- Any use and/or change of rigging equipment must be approved by SKyPAC's Technical Director before day of show.
- The Licensee shall not allow nails, tacks, stage screws, or similar articles to be driver or placed in any part of the facility without prior approval of SKyPAC's Technical Director. Repair costs will be the sole responsibility of the Licensee.
- Licensee may not use a forklift on stage.

- **Technical Labor Policies and Procedures**

- SKyPAC Technical Director or Technical Assistant must be on duty any time the Licensee's production personnel are in the facility.
- Minimum crew call will be four (4) hours for load-in, rehearsals, performances, and load-out. All billing for labor will be assessed in half-hour increments.
- Meal breaks are to be allowed after each five (5) hours and no earlier than three (3) hours of work. The entire crew will participate in this break. Meal breaks may be taken by departments as mutually agreed upon by the Licensee and the Event Technical Director.
- If meal breaks are not observed, the Licensee will be charged a meal penalty rate (one and one-half times the applicable hourly rate) after five (5) hours of work and until a meal break is observed or the end of the call is reached.
- Instead of a full-hour break, the Licensee may furnish a meal for all technical staff on call and take less than one (1), but not less than one-half (1/2) hour. No time shall be deducted for breaks of less than one (1) hour.
- All crew members shall be guaranteed two (2) hours minimum of work following a one (1) hour meal break. If a meal break over 90 minutes is taken, a new four (4) hour minimum call will ensue. Overtime rates apply to all technical staff, including department heads.
- During any call, the technical staff will be given a minimum of one (1) break of fifteen (15) minutes after three (3) hours and no earlier than two (2) hours of work in a five (5) hour period and two (2) breaks if the call is over five (5) hours. This break procedure starts over after the first eight (8) hours worked.
- An overtime rate (one and one-half times the employee's prevailing rate) will be charged for each hour worked over eight (8) hours in one day. Overtime rates apply to all technical staff, including department heads.
- An overtime rate (one and one-half times the employee's prevailing rate) will be charged for any hours worked between 2:00 a.m. and 7:00

a.m. Overtime rates apply to all technical staff, including department heads.

- Double time will be charged for all work performed on the following holidays or the day SKyPAC chooses to observe these holidays: New Year's Day; Easter; Memorial Day; Independence Day; Labor Day; Thanksgiving Day; and Christmas Day.
- The Licensee must give the SKyPAC Technical Director at least forty-eight (48) hours prior notice of its intent to cancel any crew prior to a scheduled call. Failure to inform SKyPAC Technical Director will result in an automatic charge to the Licensee equal to the cost of four (4) hours work by all personnel who were scheduled but did not work.
- SKyPAC Technical Director will assist the Licensee in adhering to the preceding Policies and Procedures. However, it is the responsibility of the Licensee to schedule the Event in such a manner as the comply and avoid penalty.
- Riggers installing or removing chain motors overhead will be charged at a premium rate. Overtime rates will be charged where applicable.
- Rigging Minimums—four (4) hours for load-in, three (3) hours for load-out

- **Additional Facility Rentals**—JKeelin@artsofsky.org
 - Rita & Jim Scott Concert Hall
 - Theater Seating: 1667-1737 seats
 - The Southern Kentucky Performing Arts Center has set a new standard for contemporary elegance in Bowling Green. It houses many exciting rental possibilities and unique venues for your public or private event, including the Rita & Jim Scott Concert Hall, Carol Wedge Studio Theatre, Laura G. Turner Lobby, and our Donor's Lounge, a light, airy space featuring a banquette of windows. We will roll out the red carpet for you and your guests and set the stage for an inspired event. With eye-catching columns, floor-to-ceiling windows, a tulip poplar chandelier, and a grand staircase, events at SKyPAC have proven to be unforgettable.
 - Main Stage
 - Banquet Seating: 150 seats
 - Reception Seating: 200 seats
 - Dimensions: 3,800 sq. ft. (100' x 38')
 - Behind the grand curtain you will find the Main Stage, which expands into a modular 3,000 square-foot area perfect for a sophisticated nightclub dinner or even a theater-themed banquet.
 - Dan & Vickie Renshaw Education Center
 - The Dan & Vickie Renshaw Education Center is comprised of three rental spaces: Education Rehearsal Hall One, Education Rehearsal Hall Two, and the Carol Wedge Studio Theater. The Education Rehearsal Halls at SKyPAC are spacious enough for your next board meeting and intimate enough for your upcoming bridal shower. Dance and theatre teachers are welcome to book either rehearsal space for monthly group or private lessons. Each rehearsal room has one mirrored wall, sprung wood floors, and 3 ballet barres available for use.
 - Carol Wedge Studio Theater
 - Banquet Seating: 120 seats
 - Reception Seating: 150 seats
 - Theater Seating: 200 seats
 - Classroom Seating: 60 seats
 - Standing Capacity: 250 people
 - Dimensions: 2650 sq. ft. (51' x 45')

- Located in the Dan & Vickie Renshaw Education Center at SKyPAC, the Carol Wedge Studio Theater is a 200-seat adaptable space, ideal for enjoying blues or jazz bands, a late evening cabaret, intimate theatrical productions, performances by local performing school groups, and other events desiring a smaller, more flexible and intimate performance environment. The adjustable quality of the Carol Wedge Studio Theater makes it the perfect setting to accommodate your banquet dinner, reception, or garden club gala; the possibilities are endless, and limited only by your imagination. (Family of Cornelius A. Martin Control Room)

- Rehearsal Room 1
 - Banquet Seating: 40 seats
 - Reception Seating: 50 seats
 - Theater Seating: 60 seats
 - Classroom Seating: 35 seats
 - Dimensions: 800 sq. ft. (25' x 32')

- Rehearsal Room 2
 - Banquet Seating: 30 seats
 - Reception Seating: 40 seats
 - Theater Seating: 50 seats
 - Classroom Seating: 24 seats
 - Dimensions: 780 sq. ft. (23' x 30')

- Donor Lounge
 - Banquet Seating: 40 seats
 - Reception Seating: 60 seats
 - Dimensions: 1290 sq. ft. (30' x 40')
 - As a SKyPAC donor and founder, the SKyPAC Lounge is an exclusive space to enjoy and host your private parties, banquets, or receptions. With a panoramic view overlooking Circus Square and the fully equipped Katherine & Andy Sikora SKyPAC Lounge Bar, the SKyPAC Lounge is modernly dressed for any occasion. Gracefully lining the windows along two walls of the space are elegantly upholstered banquettes nestled to provide a spectacular birds-eye view. The SKyPAC Lounge is also available to donors of Orchestra Kentucky's Elm Street Society during Orchestra Kentucky performances.

- Goodwin Gallery
 - Available for Art Exhibitions
 - Dimensions: 980 sq. ft. (28' x 35')
 - Spacious enough for a modest exhibition yet able to provide an intimate and close setting, the Goodwin Gallery is perfect for all different kinds of art media and layouts. It is quite modular, allowing for artistic expression to shine through design.

- Laura G. Turner Charitable Foundation Lobby
 - Banquet Seating: 300 seats
 - Reception Seating: 500 seats
 - Dimensions: 6800 sq. ft. (56' x 58')
 - Whether you are having an enchanting wedding or an inspirational business conference, the 6,800 square-foot Laura G. Turner Foundation Lobby at SKyPAC will allow your guests to experience classic and contemporary elegance with its floor-to-ceiling glass windows that “bring the outside in”, striking tulip poplar chandelier, and grand staircase, the SKyPAC lobby is the perfect modern space for banquets, receptions, or your next business gathering.

Main Stage Information and Measurements

- **Main Hall Seating Capacity**
 - 1667-1737, depending on orchestra pit seating arrangement
- **Loading**
 - Dock/Ramp—2 docks, 1 with leveler plate
 - Location—USR
 - Distance to Stage—12'
 - Number of Trucks in Dock—2
 - Trucking Parking—2 at dock and the rest at street
 - Bus Parking—3 next to dock and the rest at street
 - Shore Power—3 – 45' from Loading Dock
 - Fork Lift—N/A
 - Storage—Back Hallway
 - Elevator—N/A
 - Load Door—9'9"W x 11'10"H
- **Technical Measurements**
 - Stage Depth—45' w/ obstructions
 - Stage Width—112' w/ obstructions
 - Proscenium Width—57'
 - Proscenium Height—28'
 - Apron—6'9"
 - SR Wing—Pros to Wall – 20'
 - SL Wing—Pros to Rail – 24'6"
 - Obstructions—Shell Tower upstage
 - Crossover—Upstage Hallway
 - Lags—Yes
 - Pit Size—69'W x 9'6"D at center, tapering to 6'6"D at sides
 - Lift or Fixed?—Lift
 - Cable Runs
 - DSL to FOH Mix Pit Position (through cable trough)—67'
 - FOH Mix Pit Position to Tech Booth (through cable trough)—42'
- **Rigging/Fly Rail**
 - Fly System—Single Purchase
 - Rail Location—SL floor level
 - Number of Linesets—37
 - Batten Length—84'
 - Batten Diameter—1.5"
 - Forestage—6'9"

- Arbor Capacity—1000lbs over pipe weight
- Available Weight—20,000lbs on Bridge, 5,000lbs on Deck & Jump
- Grid Height—65'3"
- Max High Trim—between 60' and 62'
- Pipe Spacing—varies at 8" centers
- Sheaves cannot be kicked
- No diverters in house
- Stacking Motor—1 Ton, USL
- 4 pick points SL, 4 pick points SR
- Current lineset schedule varies depending on previous show needs and is available upon request

- **Electrics**

- Power
 - 2 @ 400A 120/208V 3-phase 4-wire + ground company switches
- Location of Company Switches—both USL
- Cam or Bare Tails?—Both
- House Console—ETC ION XE-20 w/ fader bank
- Console Position—Control Booth
- Network—SACN
- FOH Circuit/Hang Positions
 - Near catwalk—30 circuits, 57' @ 55° to plaster line
 - Far Catwalk—24 circuits, 83' @ 42° to plaster line
 - Balcony rail—18 circuits, 84.5' @ 15° to plaster line
 - NOTE—Very hard to hang moving fixtures from this position
 - HL+HR box booms—12 circuits per side
- On Stage Circuits
 - 1st Electric—34 circuits, permanent raceway (mix of dim and non-dim circuits)
 - 2nd thru 5th Electrics—48 circuits (8 drops of 6 circuit fan-outs each, modular and can be put on various pipes, mix of dim and non-dim circuits)
 - 13 floor pockets w/ 4 circuits each (SL, SR & US)
 - 12 wall circuits (6 DSR, 6 DSL)
- DMX Input Locations—Control Booth, FOH Mix Position, DSL, Catwalk)
- Feeder Run—50' from stage center
- House Genie Lift—Yes, 1 w/ 30' max platform height
- Strand C21 Dimmer rack

- **Current House Lighting Inventory**

- Intelligent Fixtures
 - 20 ETC High End Halcyon Titanium Moving-Head Profiles
 - 24 Martin MAC Aura XB Moving-Head Wash Fixtures
 - 30 Strand Aurora 12-Cell Cyc/Bar/Striplights
- Followspots
 - 3 Lycian 1275 Superstar 1.5 long throw fixtures located in spot booth
- Incandescent Fixtures
 - 30 ETC Source 4 750W Ellipsoidal—10° Barrel
 - 78 ETC Source 4 750W Ellipsoidal—19° Barrel
 - 36 ETC Source 4 750W Ellipsoidal—26° Barrel
 - 20 ETC Source 4 750W Ellipsoidal—36° Barrel
 - 8 ETC Source 4 750W Ellipsoidal—90° Barrel
 - 64 ETC Source 4 750W Par—all lens types
 - 20 ETC Source 4 Parnel—located in Carol Wedge Studio
 - 10 Altman 8" Fresnel 1000W
 - Various irises, barn doors, top hats, half hats, gobo template holders (A&B size), and gel frames
- Miscellaneous Fixtures
 - 2 High End Systems HQ-100 Performance Hazers
 - Note: No special considerations or preparations needed in order to haze

- **Current House Lighting Hang**

- Visual Lighting Plot Available upon request
 - LX1—5 Halcyons, 6 Mac Auras, 6 ETC S4
 - LX2—6 Halcyons, 6 Mac Auras, 6 ETC S4
 - LX3—6 Halcyons, 6 Mac Auras, 6 ETC S4
 - LX4—15 Strand Auroras (cyc lights)
 - Near Catwalk—30 S4s w/ 19° barrels
 - Far Catwalk—24 S4s w/ 10° barrels
 - Balcony Rail—18 S4s w/ mixed barrels
 - HL+HR Boxbooms—20 S4s total, 26° or 19° barrels

- **Audio**

- Power—1 @ 200A 120/208V 3-phase 4-wire+ground company switch with isolated ground
- Location of Power—DSL
- Cam or Bare Tails?—Both w/ isolated ground
- Mix Position—Rear of Lower Orchestra level
- Size of Mix Position—9'6"W x 6'6"D
- Mix Position Notes—Recessed into ground slightly below audience level
- DR Page—Yes and Program feed

- Hearing Impaired—Yes
- FOH Storage—Backstage
- Push to FOH?—Yes, 2 different routes, both easy
- Cluster/Rigging—2000# per 8'
- Trough Plenum/Floor—2 – 10" Tube Troughs
- Snake Run—120' FOH to Stage
- Notes—We allow an average A-weighted sound level of 90 decibels with no peaks above 100dB at the FOH console

- **Current Sound System & Audio Inventory** (as of 04/01/2023)

House Sound System: L'Acoustics

- Line Array— 12 cabinets flown per side; L'Acoustics Kara II
- w/ Flown Subs – 4 cabinets flown per side: L'Acoustics KS21
- Center Cluster— 12 cabinets flown (permanent); L'Acoustics Kiva II
- Ground Subs – 2 Cabinets per side: L'Acoustics KS21
- Front Fills— 6 front fill speakers: X8
- Amps— L'Acoustics

Yamaha Rivage Console System

- Front-of-House console—CS-PM5
- Monitor Console -- CS-PM3
- Two Stage Racks with 48 inputs and 32 outputs: RPIO Silk Mic Preamps
- TwinLANE Network Connectivity on Stage Left & Right, Front-Of-House, and Lighting Booth

Stage Monitors:

- 9 EAW Micro wedges
- 4 EAW-121 Wedges
- 6 EAW-JF-26's
- 2 EAW JF-29's
- 2 Galaxy Hot spots
- 4 Anchor AN-3000's
- 2 EAW-SBX220 Subs

Microphones & Accessories

- Analog Split: Whirlwind 48x8 Snake (Two)
- Assorted playback/recording units
- 6 Whirlwind Hot Box Di's—active
- 4 Jensen -passive Di's
- 4 Radial-Passive Di's
- 3 Three DPA Kit-4099-10 Mic Kit (30-DPA 4099 w/ various clips)
- 1 DPA 4099-Piano Kit (2-DPA 4099 w/ Piano Mount)

- 3 Shure SM57
- 9 Shure SM58
- 6 Shure Beta 58's
- 2 Shure Beta87C
- 1 Shure SM Beta 91
- 3 Shure Beta 98's
- 4 Shure SM81-LC
- 4 Shure MX393 Boundary
- 1 Shure VP-88
- 1 Countryman A3
- 1 AKG P170
- 8 AKG C-451 (Four C-451B & Four C-451E)
- 4 EVI N/D468
- 2 EVI RE20
- 4 SEN MD421 II
- 2 SEN e604
- 4 Sen 609
- 4 Audio-Technica AT 2020
- 2 Audio-Technica AT 4033/CL
- 6 Audio-Technica ATM11
- 4 Shure MX200 (Hanging Choir)
- 1 Shure KSM 137
- 8 Shure UX wireless with Shure and Countryman Lavaliers and Beta 58's
- Assorted microphone stands and cables
- 1 Behringer C-4
- 4 Sennheiser EW IEM G4 Wireless In-Ear Monitor System [Up to Eight (8) MONO mixes or Four (4) STEREO mixes]
- Microphone cables and stands

- **Video System**

- Main Hall
 - Projector— Digital Projection Titan Laser 33000 Lumen 4K-UHD
 - Lenses for Front & Rear projection
 - Screen—Da-Lite HD-DLX 16' x 27'6" (382" diagonal)
- Studio
 - Projector—Christie LW400 3LCD
 - 4,000 ANSI lumen WXGA 1280x800 unit
 - Screen—Da-Lite 87" x 139" NPA (164" diagonal)

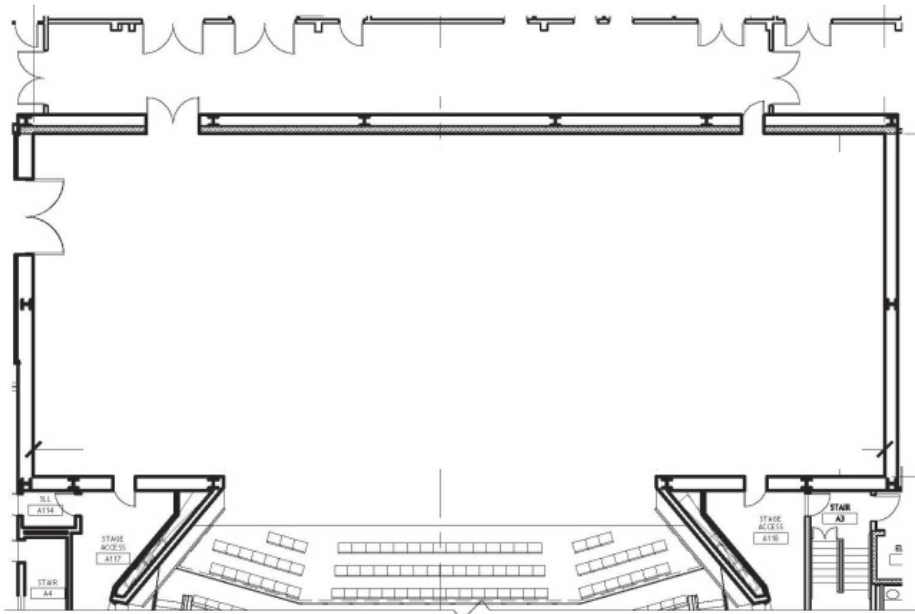
- **Communication**

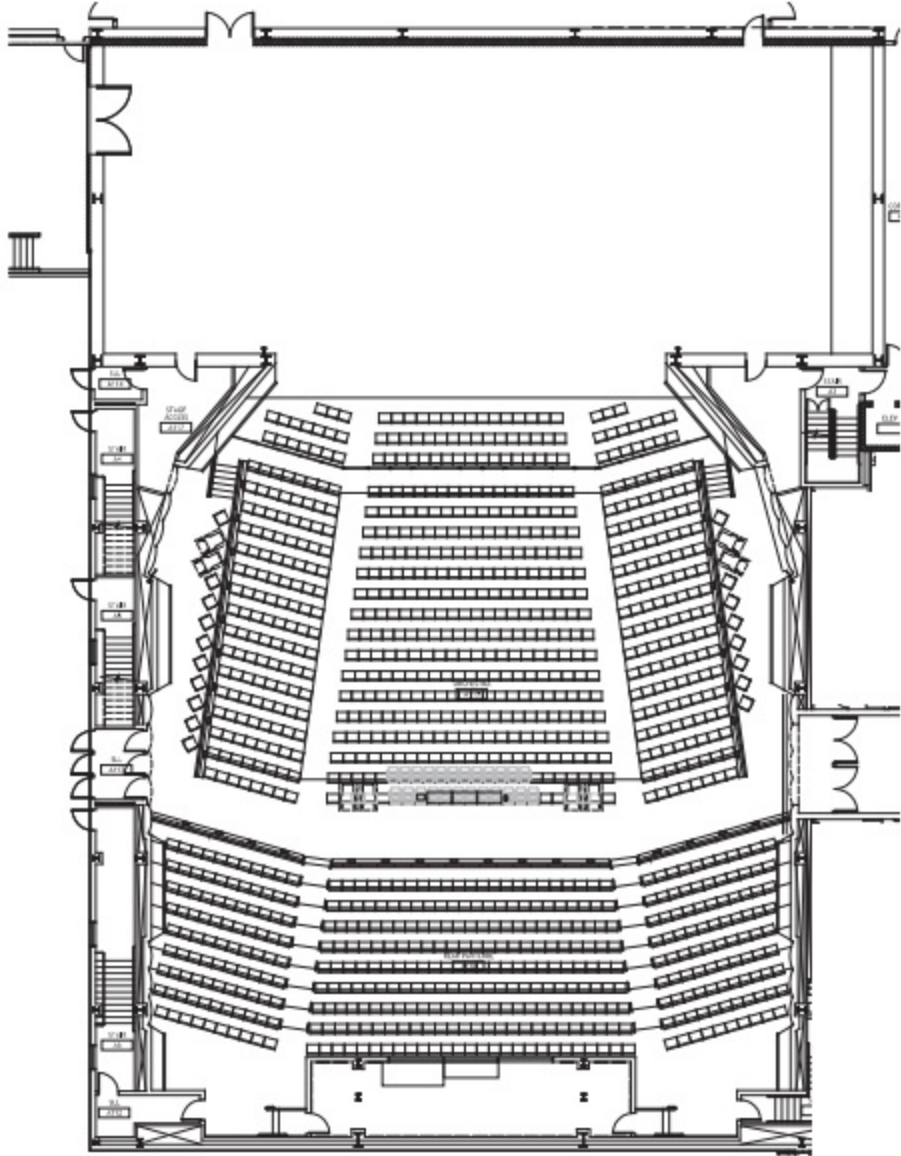
- Full Clear-Com system available throughout the building, including DSR, DSL, USR, USL, fly rail, FOH mix pit, control booth, followspot, and production office positions
- Paging and program feed to all dressing rooms, control booth, and back stage hallway

- **Backline**

- Orchestra Kentucky Keyboards
 - Kurzweil PC1x Performance Controller
 - 88-key
 - Weighted action, sustain pedal
 - Yamaha P-80
 - 88-key
 - Weighted action, sustain pedal
 - Roland KC-550 Keyboard Amp
- Orchestra Kentucky Drumset
 - Yamaha Recording Custom Series Drums (5-piece Birch, Piano Black)
 - 18' x 22" Bass Drum
 - 7.5" x 10", 8" x 12" Rack Toms, 15" x 16" Floor Tom
 - 5.5 x 14" Yamaha Recording Custom Snare Drum (Birch, Piano Black)
 - Heads
 - Snare: Evans G1 White Coated
 - Toms: Evans G2 White Coated
 - Bass Drum
 - Evans EMAD White Coated, Yamaha Black Resonant head with microphone port, Evans EQ BD internal muffler
 - Cymbals
 - Zildjian K. Custom Dark Series
 - 14" Hi-Hats
 - 16" Crash
 - 18" Crash
 - 20" Ride
 - Yamaha 800 Series Hardware
 - Hi-Hat, snare, 3 boom stands; Bass drum single pedal)
 - Rack Toms mount in the Bass Drum, Floor Tom with legs
 - Roc 'n Soc Mac Saddle Throne (Black, no seat back)
 - Road Runner drum rug (Dark Grey)

- **Wardrobe**
 - Number of rooms—8, Located off US Hallway
 - Star—2 rooms @ 1 person
 - Principal—4 rooms @ 8 people
 - Chorus—2 rooms @ 12 people
 - Showers—Yes in all
 - Wardrobe Workroom?—Yes
 - Steamers—2
 - Washer/Dryer—2 of each, located in Wardrobe Workroom
 - No Wigs Workroom; No Wig Sink; No Elevator
- **Props**
 - Tables—4 @ 30" x 96"
 - Utility Chairs—30
 - Orchestra—70 chairs / 75 stands
 - Pipe and Drape—Yes, some
- **Stage Management**
 - Production Office?—Yes
 - Production Office Location—Off US Hallway
 - Stage Management Office—w/ Production Office or a dressing room
 - Location of SM Office—w/ Production Office or a dressing room
 - WiFi/Hardline—both (WiFi is public and can be weak)
 - Green Room—Yes, located off US Hallway
- **Soft Goods**
 - House Curtain/Main Rag
 - Teal, manual draw, guillotine, full
 - 30'H x 43'6"W
 - Midstage Traveler
 - Black velour, manual draw, guillotine, full w/ backing
 - 30'H x 43'6"W
 - Legs
 - 20 Black velour, flat—28'H x 10'W
 - 8 Black velour, flat—36'H x 20'W
 - Borders
 - 5 Black velour, flat—6'H x 84'W
 - 1 black velour, flat—12'H x 60'W
 - 1 black velour, flat—12'H x 84'W
 - Full Stage Black
 - Black velour, flat—28'6"H x 43'6"W
 - Cyclorama
 - White, flat—30'H x 80'W



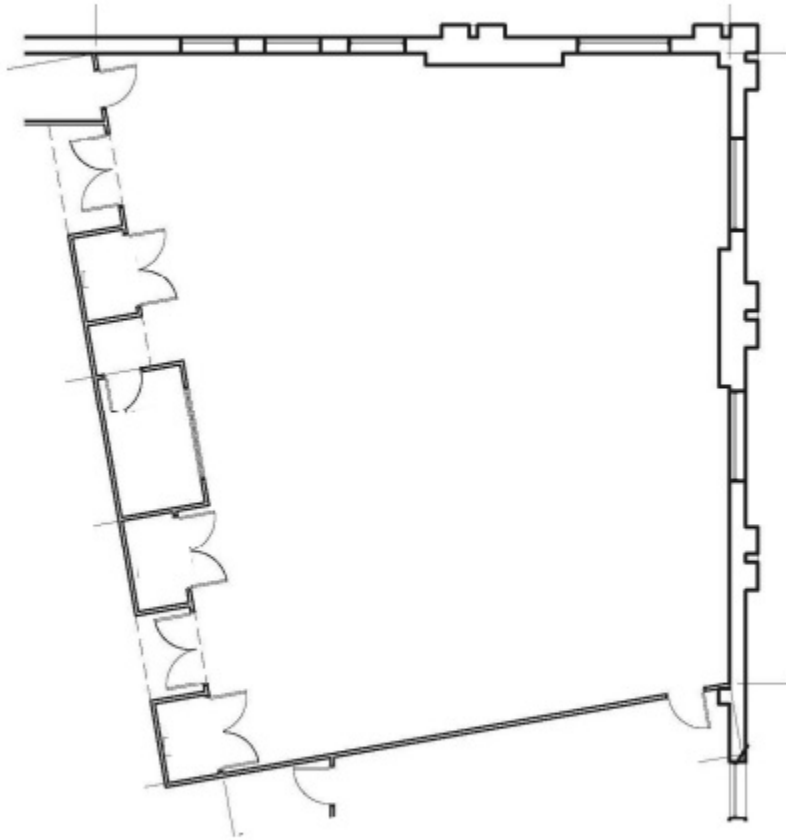


FILE TO WHICH (COPY)

Copy's Date: 6/14/2021 10:49

| | | |
|--|-------------------------------------|--|
| SKyPAC 601 College Street Bowling Green, Ky. 42101 (O) 270-904-5024 (F) 270-904-0842 Scott Gardner sgardner@artsofsky.org | Show: ??? | |
| | Date(s): DD/MM/YY | Sheaves Cannot Be Kicked |
| | System: Single Purchase | No Diverter in house |
| | Grid Height: 65'-3" | Fly Height: Varies Between 60'-0" & 62'-0" |
| | Arbor Capacity: 1000 lbs. over pipe | Pipe Length: 84'-0" |
| | Proscenium: 28'-0"h x 57'-3"w | Forestage: 6'-9" |
| | Stage Depth: 45'-0" | 40' useable |

| Set | House Hang | Distance | Show Hang | Notes |
|-----|-------------------------------|----------|-----------|---|
| | Fire Curtain | 0'-6" | | |
| 1 | Main Curtain | 1'-6" | | Travel Operation From SL or Guillotine |
| 2 | # 1 Black Border | 2'-2" | | |
| 3 | # 1 Black Legs | 2'-10" | | |
| 4 | 1st Electric | 3'-6" | | Permanent Raceway |
| 5 | | 4'-2" | | |
| 6 | | 4'-10" | | |
| 7 | | 5'-6" | | |
| | 3 - 1 ton Chain Hoists | 6'-2" | | DS Ceiling Shell - Do Not Move |
| 8 | #2 Black Border 2A | 6'-10" | | |
| 9 | #2 Black Border 2B | 7'-6" | | |
| 10 | #2 Blacks Legs | 8'-2" | | |
| 11 | | 8'-10" | | |
| 12 | 2 Electric | 10'-2" | | |
| 13 | Screen | 11'-6" | | |
| 14 | | 12'-10" | | |
| 15 | #3 Black Border | 14'-2" | | |
| 16 | #3 Black Legs | 14'-10" | | |
| 17 | 3rd Electric | 16'-10" | | |
| | 3 - 1 ton Chain Hoists | 17'-6" | | MS Ceiling Shell - Do Not Move |
| 18 | | 18'-2" | | |
| 19 | | 19'-6" | | |
| 20 | | 20'-10" | | |
| 21 | #4 Black Border | 21'-6" | | |
| 22 | Mid Stage Trveler | 22'-2" | | Does not Move |
| 23 | | 23'-6" | | |
| 24 | 4th Electric | 24'-2" | | |
| 25 | | 25'-6" | | |
| 26 | | 26'-10" | | |
| 27 | | 28'-2" | | |
| | 3 - 1 ton Chain Hoists | 28'-10" | | US Ceiling Cloud - Do Not Move |
| 28 | | 29'-6" | | |
| 29 | | 30'-2" | | |
| 30 | | 30'-10" | | |
| 31 | #5 Black Border | 31'-6" | | |
| 32 | #5 Legs | 32'-10" | | |
| 33 | | 34'-2" | | |
| 34 | 5th Electric | 35'-6" | | |
| 35 | Full Stage Black | 36'-10" | | |
| 36 | | 37'-6" | | |
| 37 | Cyclorama | 38'-10" | | |
| | SHELL WALL.... | | | DOES NOT MOVE |
| | | | | |



Useable Space: 2650 sq. ft.